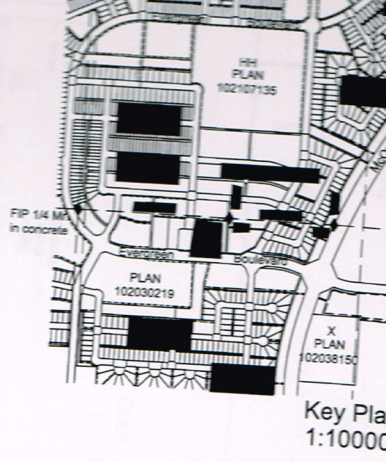
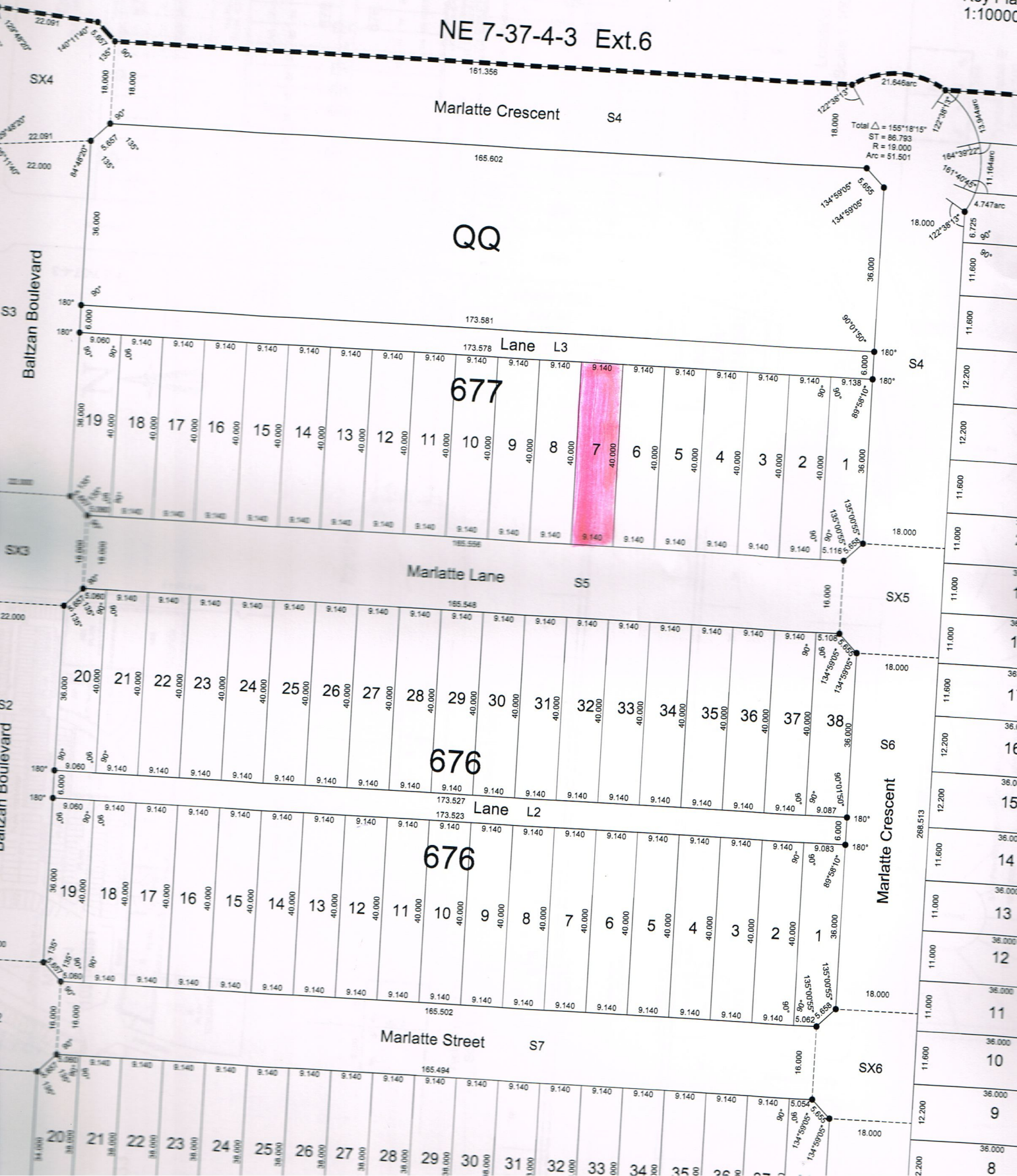


on all established stamped iron posts.
Area to be approved is outlined by a heavy dashed line.
Extension of 0 unless otherwise shown.
Standard Iron Posts found are shown thus
All lot corners, not marked by a standard post, are marked by 0.013 X 0.450 small iron posts.



NE 7-37-4-3 Ext.6



161.356

Marlatte Crescent S4

QQ

Lane L3

677

Marlatte Lane S5

676

Lane L2

676

Marlatte Street S7

Marlatte Crescent

Baltzan Boulevard

Baltzan Boulevard

Key Plan
1:10000

Digital Planimetrics Inc.

Total $\Delta = 155^{\circ}16'15''$
ST = 86.793
R = 19.000
Arc = 51.501

134°59'05" 5.655
134°59'05" 5.655

134°59'05" 5.655
134°59'05" 5.655

134°59'05" 5.655
134°59'05" 5.655

134°59'05" 5.655
134°59'05" 5.655

134°59'05" 5.655
134°59'05" 5.655